

# Life Sciences





SCILS60021

### Microscopes Student - Beginner

Models SJ-2 & SJ-4  
 Mechanical Tube Length 160mm  
 Upright Eye Tube  
 Eyepieces WF 10X  
 Achromatic Objectives 4X, 10X, 40X (S)  
 Coarse Adjustment  
 Fine Adjustment - (SJ-4 only SCILS60022)  
 Stage Area - 85 X 90 mm  
 Concave Piano Mirror 40 mm diameter

**Accessories:**

Eyepieces WF 15X with fixed pointer  
 LED illuminator



SCILS60023

### Microscopes Student - Beginner

Models SJ-6 & SJ-8  
 Mechanical Tube Length 160mm  
 45 deg. Inclined Head 360 deg. Rotatable  
 Eyepieces WF 10X  
 Achromatic Objectives 4X, 10X, 40X (S)  
 Coarse Adjustment  
 Fine Adjustment - (SJ-8 only SCILS60024)  
 Stage Area - 85 X 90 mm  
 Concave Piano Mirror 40 mm diameter

**Accessories:**

Eyepieces WF 15X with fixed pointer  
 LED illuminator



SCILS60223

### Eyepiece

Huygenian, standard size will fit any microscope with a standard diameter draw tube, all are coated to reduce reflection



SCILS60041



SCILS60042

## Microscopes Student - Beginner

Models CT-1 & CT-2  
 Mechanical Tube Length 160mm  
 Upright Eye Tube  
 Eyepieces H10X, H15X (CT-1)  
 Eyepieces H5X, H10X, H15X (CT-2)  
 Achromatic Objectives 4X, 10X, 40X (S) (CT-1)  
 Achromatic Objectives 10X, 40X (S), 100X (S)  
 Oil (CT-2)  
 Coarse & Fine Adjustment  
 Stage Area - 120 X 120 mm  
 Iris Diaphragm  
 Fixed 1.25 N.A. Condenser, Iris Diaphragm  
 (CT-2)  
 Concave Piano Mirror 50 mm diameter

### Accessories:

Eyepieces WF 10X, WF 15X with fixed pointer  
 Objectives 60X  
 Detachable Mechanical Stage  
 Elec-illuminator 110 or 220V



SCILS60062



SCILS60061

## Microscopes Student - Beginner

Models PKJ-2 & PKJ-4  
 Mechanical Tube Length 160mm  
 Upright Eye Tube - PKJ-2  
 45 deg. Inclined Head 360 deg. Rotatable - PKJ-4  
 Eyepieces H5X, H10X, H15X  
 Achromatic Objectives 4X, 10X, 40X (S) - PKJ-2  
 Achromatic Objectives 10X, 40X (S), 100X (S) Oil -PKJ-4  
 Coarse & Fine Adjustment  
 Stage Area - 120 X 120 mm  
 Iris Diaphragm  
 Movable 1.25 N.A. Condenser, Iris Diaphragm with  
 Detachable mechanical stage.  
 Concave Piano Mirror 50 mm diameter

### Accessories:

Eyepieces WF 10X, WF 15X with fixed pointer  
 Objectives 60X  
 Elec-illuminator 110 or 220V  
 Elec-illuminator 110 or 220V



SCILS60261

## Eyepiece Wide Field

For use in Monocular and Binocular Microscopes.



### Objectives Achromatic

With standard threads and may be used on any microscope. Lenses are coated and corrected.

- 1. X4 / 0.10 - SCILS60281
- 2. X10 / 0.25 - SCILS60282
- 3. X40 / 0.65 - SCILS60283



### Objectives Achromatic - DIN Standard Semi Plain

With standard threads and may be used on any microscope. Lenses are coated and corrected.

- 1. X4 / 0.10 - SCILS60301
- 2. X10 / 0.25 - SCILS60302
- 3. X40 / 0.65 - SCILS60303



SCILS6082

### Microscope Glass Slides - Plain

Made from best clear and flat glass, with ground and polished edges. Dimensions variation of slides  $\pm 1$  mm in length and width. Size 75 x 25 mm Thickness 1.1 - 1.2. Pack of 50.

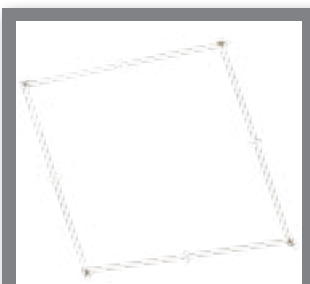
AVAILABLE IN PACKS OF 100 ALSO



SCILS60941

### Micro Cover Glasses

Made from clear and optically glass, the cover glasses are uniform in size and free from scratches and striations. Packed in plastic box for easy handling. Pack of 10 gm



SCILS6504

### Folding Quadrat

For population counts and other measurements in the field. Consists of a 4 white coated steel rods 0.5 m long with markers at 0.25 m, which simply bolt together to form a quadrant frame. Folds flat when not in use.





SCILS6149

## Dissecting Scissors

Student, 9 instruments

Stainless steel, consisting of 9 instruments for accurate dissection.

Supplied in zipper leather case.

Scissors	2 Nos.
Forceps	2 Nos
Needle Wooden Handle	2 Nos.
Scalpel	1 No.
Scalpel Handle with Blade	1 No.
Dropper Glass	1 No..

Case made of zinc-coated steel sheet, covered with vinyl and fitted with a flush winding-handle.



SCILS6152ECO

## Dissecting Set - Economy Stainless Steel

consisting of 7 instruments for accurate dissection.

Supplied in leather storage case.

Scissors	1 No.
Forceps	1 No.
Needles	2 Nos.
B.P. Handle with Blade	1 No.
Dropper Glass	1 No.
Ruler 6"	1 No.



## Dissecting Scissors

Stainless Steel, Fine points and open shanks.

SCILS61541 - 110mm

SCILS61542 - 130mm



SCILS6156

## Dissecting Scissor Straight

Stainless steel, closed shanks, overall length 125 mm-handle.



SCILS6158

## Dissecting Scissor Blunt End

Stainless steel, closed shanks, overall length 125 mm-handle.



### Needle Hardwood Handle

Needle, 33 mm length mounted in 100 mm hardwood.

- SCILS61641 - Straight
- SCILS61642 - Curved



SCILS61681

### Forceps Pointed Ends

Stainless steel.

- SCILS61681 - 110mm
- SCILS61682 - 130mm



### Forceps Blunt Ends

Stainless steel.

- SCILS61701 - 110mm
- SCILS61702 - 130mm



SCILS6181

### Disposable Scalpels

Durable permanent fitted blades.



SCILS61821

### Scalpels Handle

High quality steel handles, slotted to accept blades.

- SCILS61821 - No.3
- SCILS61822 - No.4
- SCILS61823 - No.5
- SCILS61824 - No.9



SCILS61861

## Dissecting Tray

Made of Stainless steel.



SCILS61862

## Dissecting Tray, Aluminium



SCILS6204

## Osmosis Kit

Designed for demonstration of osmotic pressure at an elementary level in biology. A semi-permeable is attached to the wide end of a funnel having an indicator tube. The funnel is fixed in the reservoir. Supplied with teat dropper pipette.



SCILS6209

## Parchment Paper

For Osmosis test. Pack of 50 leaves.



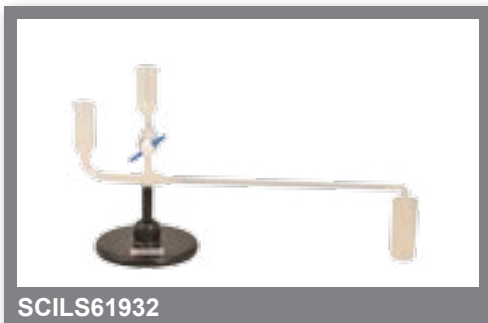
SCILS61931

Potometer Ganong's with Glass stopcock on wooden base

### Potometer Ganong's

For demonstration of transpiration rates and rates of water absorption by a cut shoot under various external conditions. A plant shoot is sealed into a stopper which fits the end tube and whole apparatus is filled with water, the open end of the capillary tube, which is graduated in millimeter, dipping into beaker of water. The position of the air bubble may easily be adjusted by opening the glass stopcock to admit water from the reservoir. Mounted on wooden base by clips.

- Height to top of reservoir 170 mm
- Diameter of reservoir 20 mm
- Length, overall 320 mm
- Base 20 x 80 mm
- Capillary bore 1 mm



SCILS61932

Potometer Ganong's with Glass stopcock on bakelite stand

### Potometer Ganong's

For demonstration of transpiration rates and rates of water absorption by a cut shoot under various external conditions. A plant shoot is sealed into a stopper which fits the end tube and whole apparatus is filled with water, the open end of the capillary tube, which is graduated in millimeter, dipping into beaker of water. The position of the air bubble may easily be adjusted by opening the glass stopcock to admit water from the reservoir. Mounted on wooden base by clips.

- Height to top of reservoir 170 mm
- Diameter of reservoir 20 mm
- Length, overall 320 mm
- Base 20 x 80 mm
- Capillary bore 1 mm



SCILS6242

### Clinostat

To runs 30 hours in vertical or horizontal position, with clock movements based on heavy metal stand.

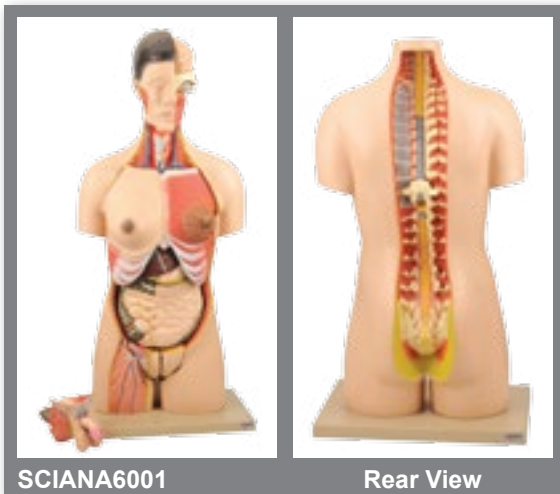


SCILS6244

### Clinostat Electric

For demonstration of heliotropism and geotropism. Germinating seedlings are pinned to the cork table which is rotated by an electric motor at 4 revolutions per hour. The motor is spindle mounted and may be clamped so that the place of the table can be set at any angle between horizontal and vertical. An acrylic cover is provided for the cork table to shield the seedlings from droughts. Diameter of cork disc 100 mm





SCIANA6001

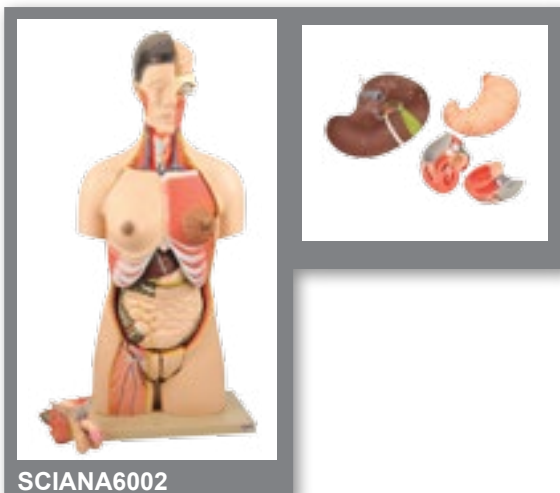
Rear View

## Torso with Interchangeable Sex Organs

24 Parts

Life size cut away spine showing the head with nasal and buccal cavity, half brain, eye with optic nerve. Removable female breast with rib insertions, heart in 2 parts, 2-lung halves, liver with gall bladder, 2-part stomach, large and small intestines with appendix flap opening and cover, half of kidney. Male genital organs in 4-parts and female genital organs in 2-parts with embryo in the 3rd month of pregnancy. The back shows the vertebral column, spinal cord with nerve endings and the 7th dorsal vertebra is removable. Mounted on a base. Numbered with English Key Card.

Size 38 x 24 x 89 cm approx. Weight 7.5 kg approx.



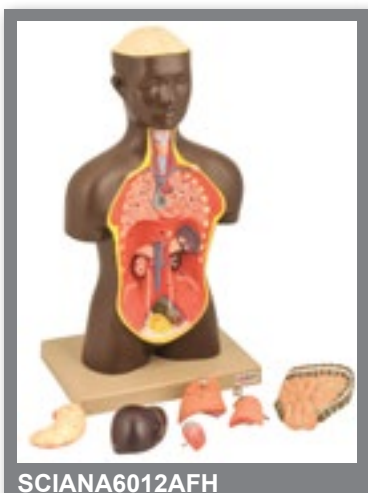
SCIANA6002

## Torso Sexless - 13 Parts

13 Parts

Life size Sexless torso in 13 parts. The eye with optical nerve and half brain are removable. The lungs and heart in two parts, liver, stomach, front portion of the kidney, half of the bladder and large and small intestines with appendix flap opening and cover. Numbered with English Key Card.

Size 38 x 24 x 89 cm approx. Weight 10 kg approx



SCIANA6012AFH

## Torso half size with Head African - 9 Parts

9 Parts

African torso, can be dissected into 9 parts. Half life-size can be quickly disassembled this torso, by removing lungs and heart - 2 parts, stomach, liver and gall bladder, intestine 2 parts. Mounted on base numbered with English keycard.

Size 25 x 18 x 45 cm approx. Weight 1.7 kg approx.



SCIANA6016

### Human Head & Brain - 3 Parts

3 Parts

Life size model of the human head mounted on base. The brain dissectable into 2 parts, can be taken out, showing the cranial nerves and the important internal parts of the skull. Numbered with English Key Card.

Size 25 x 18 x 20 cm approx. Weight 1.7 kg approx.



SCIANA6018

### Model Half of the Human Head

Natural size, shows median section of human head, brain, nose, mouth, and pharynx, larynx and vertebral column of the neck. On base numbers with English Key Card.

Size 30 x 20 x 5 cm approx. Weight 900 g approx.



SCIANA6208

### Human Brain Model - 2 Parts

2 Parts

A centrally divided detailed model of brain divided in two parts showing all structures beautifully with natural colours. With removable base.

Size 19 x 15 x 15 cm approx. Weight 1 kg approx.



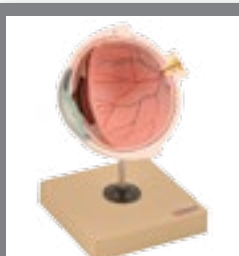
SCIANA6026

### Model Human Eye 3 times Enlarged - 7 Parts

7 Parts

The upper half of the sclera with cornea and eye muscle attachments, both halves of choroids with iris and retina, lens and vitreous humour are removable. On base. Numbered with English Key Card.

Size 12 x 12 x 17 cm approx. Weight 300 g approx.



SCIANA6029

### Human Eye Half on Stand

This economical model with cut-away to show inner anatomy, including optic nerve, disc, macula, retina, central retinal artery and vein. Lens and cornea are removable.

Size 13 x 12 x 22 cm approx. Weight 400 g approx.



SCIANA6038

## Human Ear - 3 Parts

Enlarged 2 times, dissects into 3 parts, showing external, middle and internal portion. Ossicles and labyrinth can be taken out. On base. Numbered with English Key Card.

Size 25 x 18 x 15 cm approx. Weight 450 g approx.



SCIANA6042

## Human Ear - 5 Parts

5 Parts

Enlarged approx. 4 times. The petros portion of the temporal bone section of the auditory canal are removable, with labyrinth can be taken out and opened. The tympanic membrane with malleus and incus can be removed in 5 parts. On base. Numbered with English Key Card.

Size 33 x 23 x 20 cm approx. Weight 1.3 kg approx.



SCIANA6046

## Upper Triple Root Molar with Caries

Enlarged 15 times in 2 parts longitudinal section through crown, 2 roots and pulp cavity. On base. Numbered with English Key Card.

Size 13 x 13 x 23 cm approx. Weight 300 g approx.



SCIANA60502

## Dental Care Model - Giant

3 times life size

Enlarged model to demonstrate dental care with big size Brush.



SCIANA60601

## Larynx Full Size - 2 Parts

Shows larynx, wind pipe, ligaments, muscles and thyroid gland. The model is medially divided, one half removable. On base. Numbered with English Key Card.

Size 13 x 13 x 23 cm approx. Weight 630 g approx.



SCIANA60682

### Heart and Lungs Model - 7 Parts

7 Parts

Showing larynx 2-parts removable, wind pipe with bronchial tree, heart 2-parts, removable, subclavian artery and vein, venacava, aorta, pulmonary artery, oesophagus, 2 lungs front halves removable and diaphragm. On base. Numbered with English Key Card.

Size 42 x 30 x 14 cm approx. Weight 2.3 kg approx.



SCIANA6073

### Human Heart - 7 Parts

7 Parts

Enlarged. Sectioned so that both ventricles and atria open to expose the valves. Large blood vessels near the heart and musculature of the heart are shown. Separates into 7 parts. On base. Numbered with English Key Card.

Size 13 x 13 x 28 cm approx. Weight 750 g approx.



SCIANA6078

### Human Heart - 2 Parts

2 Parts

Life size model dissectable in 2 parts. The anterior heart wall can be removed to show the left and right ventricles and atria as well as the tricuspid, pulmonary, mitral and aortic valves. Mounted on base. Numbered with English Key Card.

Size 14 x 12 x 20 cm approx. Weight 570 g approx.



SCIANA6088

### Human Skin

Enlarged 70 Times, full size, shows section through three layers of the hair covered skin of the head. Also shows hair follicles with sebaceous, sweat glands, receptors, nerves and vessels. On base. Numbered with English Key Card.

Size 33 x 23 x 6 cm approx. Weight 900 g approx.



SCIANA6093

### Human Digestive System - 2 Parts

2 Parts

Model showing nose, mouth cavity and pharynx, esophagus, the gastrointestinal tract, liver with gall bladder, pancreas and spleen, duodenum, cecum and rectum are opened. Transverse colon is removable. Mounted on base. Numbered with English Key Card.

Size 81 x 30 x 7 cm approx. Weight 3.5 kg approx.





SCIANA6095

## Human Digestive Canal

Showing the structure of Human Digestive Canal, supplied in three parts as illustrated. Mounted on base. Numbered with English Key Card.



SCIANA6098

## Model Intestinal Villus

Representation of an entire villus of one longitudinally sectioned villus to show arterioles and venules and of one cut villus to show the lymphatic vessels. With enlarged representation of a longitudinal section of one crypt of Lieberkuehm. Numbered with English Key Card.

Size 18 x 8 x 26 cm approx. Weight 630 g approx.



SCIAM61051

## Model Aids Virus

Model of HIV virus is enlarged millions of times shows the outer lipid membrane with protein structures and the internal nucleus which contains the viral hereditary matter (RNA). The nucleus is removable and condoms can be put underneath to provide a message regarding measures to take in protecting against HIV infections.

Size 12 x 12 x 10 cm approx. Weight 600 g approx.



SCIANA6110

## Human Kidney with Adrenal Gland - 2 Parts

This model shows kidney with adrenal gland as well as renal and adrenal vessels and upper portion of ureter. Front half of kidney is removable to show cortex medulla and vessels as well as renal pelvis. On base. Numbered with English Key Card.

Size 12 x 12 x 28 cm approx. Weight 400 g approx.



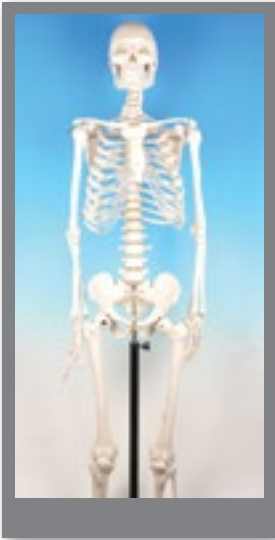
SCIANA6111

## Nephron Kidney Globule

Expansion model of the nephron kidney globule and foot cell. Supplied in 3 parts, each mounted on base. Numbered with English Key Card.

Size 53 x 26 x 9 cm approx. Weight 1.3 kg approx.





### Human Skeleton Model

Life size model of human skeleton mounted on stand, made of fibre material, finished in natural colour with plastic cover. Mounted on base. Numbered with English Key Card.

SCIANA61281 - Economy  
SCIANA61282 - Superior



SCIANA6127PRE

### Prehistoric Man Skull - Set of 6

SET OF 6

Set consists of Afarenis cranium, Africanus cranium, Habilis cranium, Erectus cranium, Neanderthalensis cranium, Steinheim skull etc.



SCIANA6134

### Human Knee Joint

Model of human knee joint. Mounted on base. Numbered with English Key Card.

Size 12 x 12 x 33 cm approx. Weight 750 g approx.

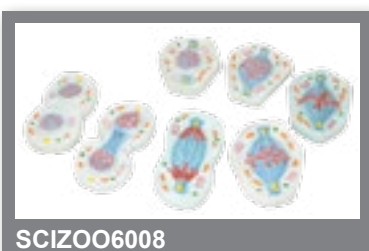


SCIZOO6005

### Animal Cell

3 - Dimensional model, with one side dissection to show complete internal structure of animal cell. Mounted on base. Numbered with English Key Card.

Size 18 x 7 x 29 cm approx. Weight 800 g approx.



SCIZOO6008

### Mitosis Model Set of 8

SET OF 8

Robust models illustrating the process of mitotic cell division. The chromosomes are painted to allow easy identification.

Size 41 x 33 x 3 cm approx. Weight 2.5 kg approx



SCIZOO6007

## Cell Division Mitosis

This model is comprised of collectively 10 stages, showing the main stage of the mammal cell mitosis (prophase, metaphase, anaphase and telophase) at an enlargement of approx 8000 times. During all stages one can observe the different characteristics of the cellular structures such as chromosomes, centrioles, spindle and nucleus. Every piece is numbered to indicate the correct sequence of steps.

Size 35 x 17 x 5 cm approx. Weight 1.1 kg approx.



SCIZOO6010

## Animal Cell Division Meiosis

Set of 12 models, showing detailed stages in meiotic cell division, beautifully coloured to bring out the detailed structure as seen under the microscope. Mounted on base.

Size 50 x 45 x 4 cm approx. Weight 2.4 kg approx.



SCIZOO6042

## Hydra L.S.

Enlarged, dissection showing mouth coelenteron, testis, gland cells, ovum, ovary etc. Mounted on base. Numbered with English Key Card.

Size 42 x 30 x 4 cm approx. Weight 1 kg approx



SCIZOO6054

## Model of D.N.A.

Model showing segment of D.N.A. molecule mechanism of replication, to show the double helix coiling and reforming, nucleotides and the structural formula to show the molecule shapes and bond and angles distorted. Complete model arranged on a board.

Size 60 x 45 x 4 cm approx. Weight 3 kg approx.



SCIZOO6058

## DNA Model Kit

Easy to construct the three dimensional model of DNA. Emphasizing the base pair sequence and function of DNA, the sturdy, colorful bases snap together in the correct sequence, and the pairs attach to a centerrod representing hydrogen bonds. Two flexible strands signifying alternating pentose and phosphate units attach to the end of each pair, forming the double helix. Once completed, model can be rotated on its sturdy base. Includes enough materials to construct one models. Supplied with manual.

Size 13 x 13 x 46 cm approx. Weight 240 g approx



SCIBOT6001

### Typical Flower Dissectable

Representing a greatly enlarged idealized complete flower, this non-break resistant plastic model teaches angiosperm pollination and fertilization. Mounted on base. Numbered with English Key Card.

Size 37 x 25 x 31 cm approx. Weight 1 kg approx.



SCIBOT6114

### Plant Cell

This plant cell model is separated in 4 parts. Showing details of cell wall and inner details of cell wall, nucleus is separated and defined in a 3-D way cut section of chloroplast is shown. Mounted on base. Numbered with English Key Card.

Size 33 x 26 x 8 cm approx. Weight 1.3 kg approx



SBIBOT6118

### Type of Plant Tissues

Showing three types of plant tissue - Simple permanent tissues, Compound permanent tissues and Glandular permanent tissues. Mounted on base. Numbered with English Key Card.

Size 60 x 45 x 4 cm approx. Weight 4 kg approx.



SCIBOT6010

### Dicot Stem Anatomy T.S. & L.S.

This plant cell model is separated in 4 parts. Showing details of cell wall and inner details of cell wall, nucleus is separated and defined in a 3-D way cut section of chloroplast is shown. Mounted on base. Numbered with English Key Card.

Size 33 x 26 x 8 cm approx. Weight 1.3 kg approx



SCIBOT6016

### Monocot Stem T.S.

Showing various tissues vascular bundles in transverse section of monocot stem of maize. On base. Numbered with English Key Card.

Size 33 x 23 x 5 cm approx. Weight 750 g approx.



SCIBOT6018

## Leaf Anatomy

3-Dimensional model of leaf showing detailed structure of transverse section and longitudinal section. On stand. Numbered with English Key Card.



SCIBOT6024

## Dicot Root T.S.

Showing complete internal details. On base. Numbered with English Key Card.

Size 33 x 23 x 5 cm approx. Weight 750 g approx



SCIBOT6046

## Dicot Seed Germination (Pea)

Model showing germination of dicot plant (Pea) seeds of development. On base. Numbered with English Key Card.

Size 42 x 30 x 7 cm approx. Weight 1 kg approx.



SCICHA6078

## Globe Model of Earth

Showing the layers inside the Earth with 7 detachable parts showing the interiors of Earth. Different colours for different layers. When upper crust is removed, inner core with layers can be seen. When layers one by one are removed you can find the periphery of each layer.

### RAISED RELIEF PLASTIC SCIENTIFIC MODELS GENERAL BOTANY - III



SCICHA6010

- T.S Dicot Root
- T.S Dicot Stem

### RAISED RELIEF PLASTIC SCIENTIFIC GENERAL ZOOLOGY - II



SCICHA6016

- T.S Dicot Root
- T.S Dicot Stem

### RAISED RELIEF PLASTIC SCIENTIFIC MODELS GENERAL BOTANY - II



- D.N.A
- R.N.A
- Bacteria